

harman/kardon®

ENGLISH



# guide + play™

GPS 810EU/GPS 910EU

Quick-Start Guide

# What's in the Box

Car Charger (12-24V)  
Wall Charger (110-230V)  
USB Cable  
Quick-Start Guide  
Carrying Case  
Fold-Flat Mounting  
Bracket

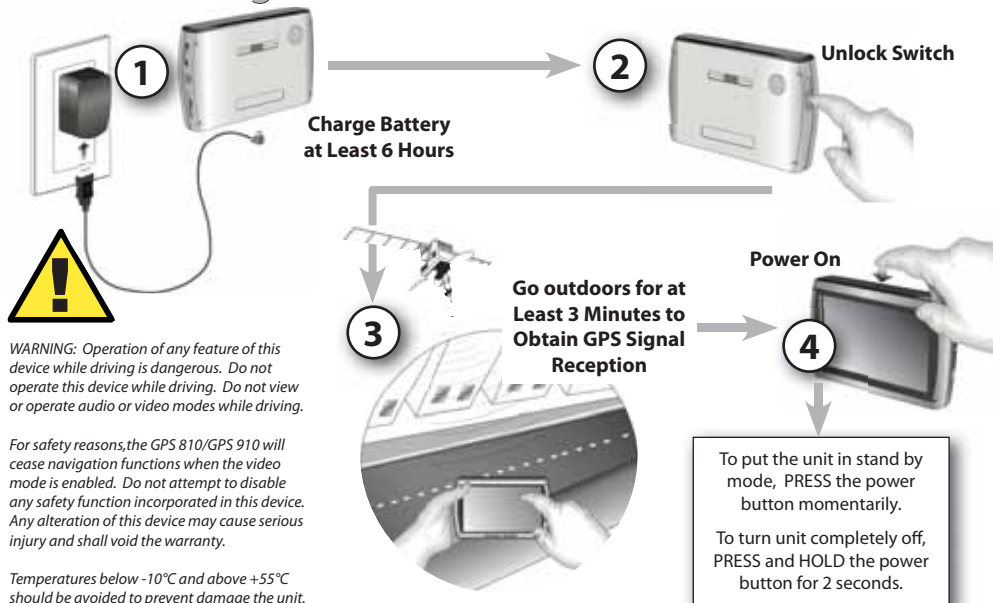
GPS unit.  
Plastic Adhesive Disc  
for Dash-Mount  
Wireless Remote  
Control with Battery

Mounting Disc for  
Wireless Remote  
Alcohol Cleaning Pads  
for Mounting  
Surfaces



Download the complete User's Manual at [www.guideandplay.eu](http://www.guideandplay.eu)

# Before You Begin



# Setup Wizard

1  
Select Language



2  
Select Units



3  
Select Time Zone



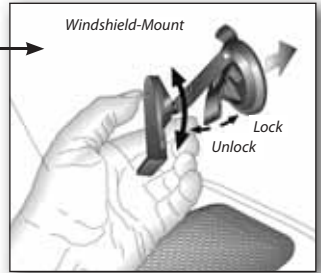
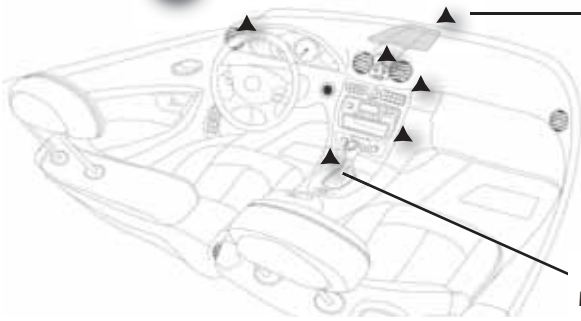
4  
Confirm Time of Day



*The geographic information provided by this device serves as a navigational aid only and does not include information pertaining to construction, road closures, speed restrictions, road or traffic conditions, or other circumstances relevant to public safety. The driver must always be aware of the actual road conditions and surroundings, and decide whether or not to follow the information provided by this device. Obey all traffic laws and observe safe driving practices. The manufacturer does not accept responsibility for any inaccurate or incomplete information provided by this device.*

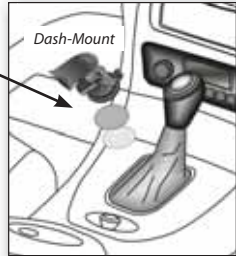
# In-Vehicle Installation

## 1 Select Mounting Location



## 2

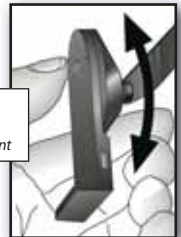
### Install Mounting Base



Clean dash with supplied alcohol pad.

## 3

### Install the unit in Mounting Base



The GPS unit needs to be angled towards the driver to allow proper operation of built-in hands-free microphones.

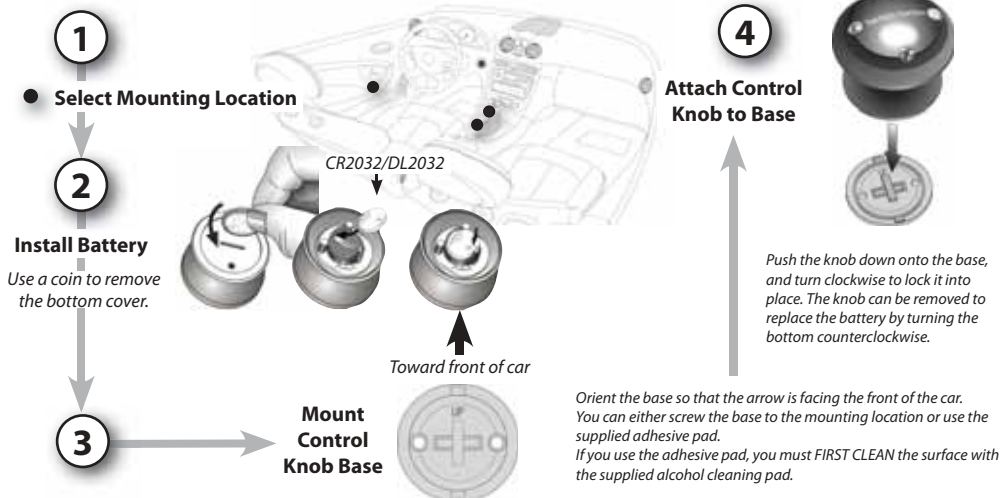
Do not install this device in any manner that impairs the safe operation of the vehicle. Do not install this device on any airbag panels or in the deployment field of any airbags. Do not place the device on the vehicle's dashboard unsecured. Failure to observe the installation or usage instructions may result in traffic accidents or personal injury.

The installation of this device on the windshield, between the driver and the windshield, or otherwise in any manner that obstructs the driver's clear view of the road or traffic conditions is dangerous and may be prohibited by law. In this case other mounting methods should be used. Check your local laws before mounting.

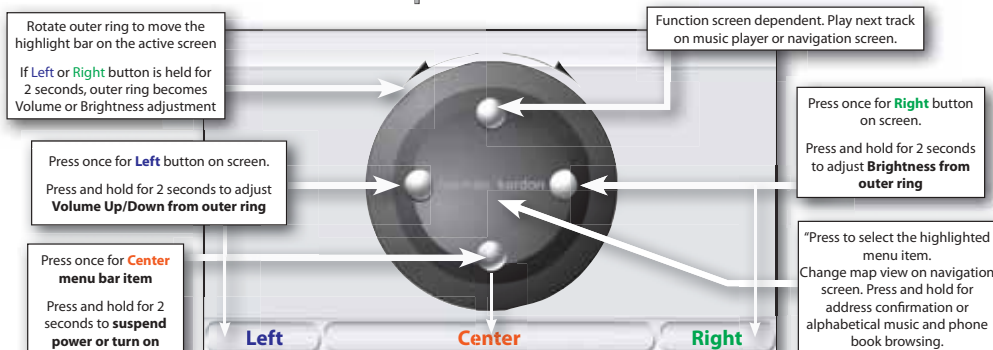
Please connect car charger to mounting base to receive traffic messages (TMC). The FM antenna required for TMC reception runs inside the car charger cable.

# Mounting the Control Knob\*

\* The control knob makes it easier to operate the unit. However, this is not a mandatory part of the installation.



## Control Knob Button Operation



# Plan Your First Trip

1

Choose  
"Plan a Trip"



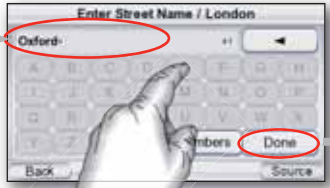
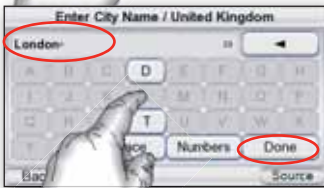
2

Choose  
"Address"



3

Enter  
Destination



4



Choose "Go"

Follow the  
On-Screen Prompts

5

Quick-Start Guide

# Connecting a Bluetooth Phone\*

\* A **Bluetooth®** equipped phone is required to operate the phone features of the GPS unit. Please read the instructions with your particular phone to determine how to place it into "pairing" or "discovery" mode to set up the connection with the unit.  
 "Phone Book" and "Voice Dial" support depend on the capabilities of the selected phone. Please consult the manual of your cell phone to learn more about supported features.

**1**

**Place your Bluetooth® enabled phone in the "pairing" or "discovery" mode.**

**2**

**From the Menu Select "Phone"**

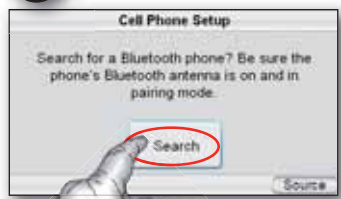


The first time you select "Phone" with no previous devices in the memory, the "Cell Phone Setup" screen automatically appears

**3**

**Press "Search"**

The unit will search and retrieve names of all Bluetooth® devices in range



**4**

**Select Phone**

The unit will connect to the selected device and then import the Phone Book and Call History



**5**

**Finished!  
Now you are ready to place and receive calls!**



# Placing and Receiving Calls

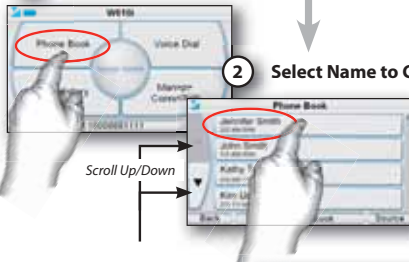
You can place and receive calls directly from the screen of the unit once a phone is paired. Voice dialing is only available if your phone supports it.

There are several ways in which to place calls



## Example: Placing a call from the Phone Book

- 1 Select "Phone Book"



Scroll Up/Down

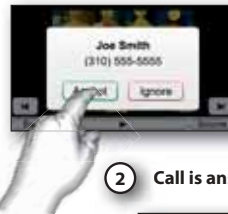
- 3 Call is Placed

Hang up when call is finished



## Example: Receiving an incoming call

- 1 When a call is incoming, choose "Accept"



- 2 Call is answered. Begin speaking.

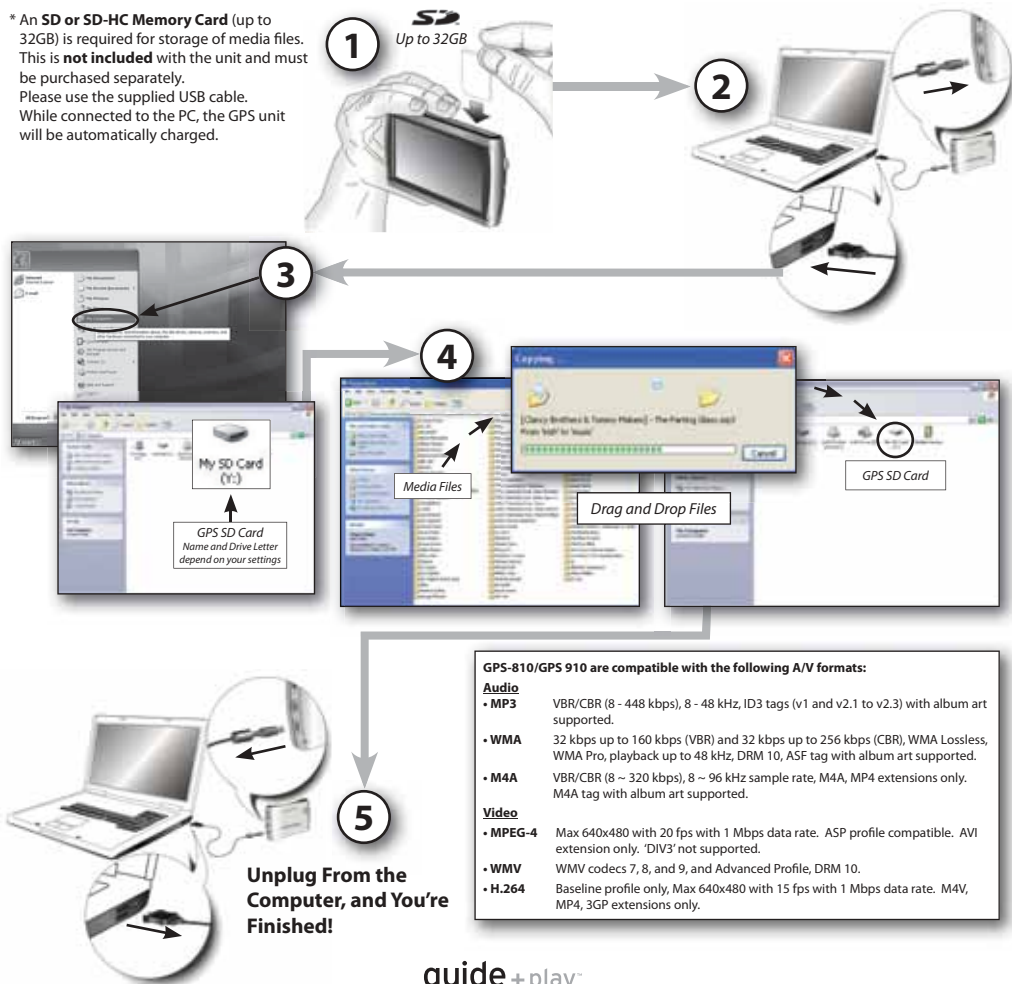
Hang up when call is finished





# Loading Media Files\*

\* An **SD or SD-HC Memory Card** (up to 32GB) is required for storage of media files. This is **not included** with the unit and must be purchased separately. Please use the supplied USB cable. While connected to the PC, the GPS unit will be automatically charged.



# Syncing Media Files

## Requirements

- PC running Windows XP service pack 2 or higher.
- Windows Media Player 10 or higher installed on PC.
- Software decoder to play media files with Windows Media Player.
- SD card (FAT32 format) with sufficient free space to hold media files to sync.

## Prepare GPS unit for Sync

- 1
- Insert the SD card into the GPS unit SD card slot.
- Disconnect the USB cable from the GPS unit.
- Enter “Settings” menu, go to “PC Connect” and select “MTP”.
- Use supplied USB cable to connect the GPS unit to a PC USB hub.

2

## Prepare PC for Sync

When plugging the cable in for the first time, you will see the following screen or similar:

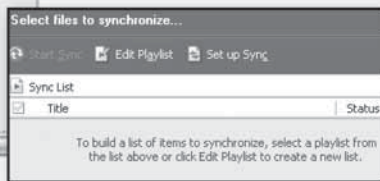


Select “Manual” to manually select media files to sync to device.

3

## Find Files on PC

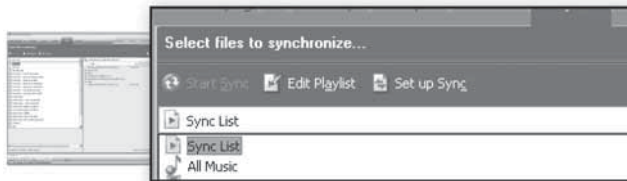
In the Windows Media Player go to “Sync” to define a “Sync List”.



# Syncing Media Files

4

Select Files

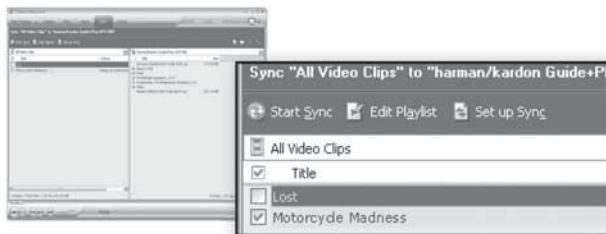


Select the files you wish to sync from the sync list. If necessary, Windows Media Player will automatically transcode audio or video files to the format supported by the GPS unit. In order to do this, the decoder required for the media format must be installed on the PC – this can be tested by playing the media file using Windows Media Player. If it plays, the decoder is installed. If it does not play, the decoder must be installed first.

5

Sync Files

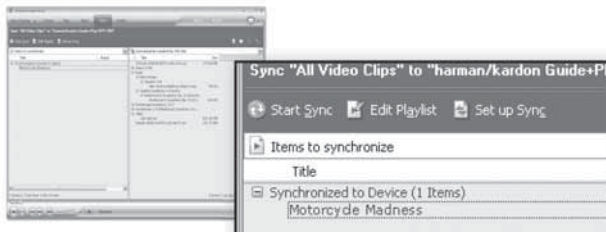
Once you've selected files to sync, press the "Start Sync" button. Wait for the sync operation to finish.



6

Finished

Once the sync is finished, the video is on the SD card, the media file is on the SD card. Unplug the USB connection to play the media files on the GPS unit from the "Music" or "Video" menu.



# Using the Multimedia Applications

## Source Menu Switcher



For safety reasons, this device will cease navigation functions when the video mode is enabled. Do not attempt to disable any safety function incorporated in this device. Any alteration of this device may cause serious injury and shall void the warranty.

**Audio Menu**  
(Red Icon)

**Photo Menu**  
(Yellow Icon)

**Video Menu**  
(Green Icon)



## Now Playing Music Screen Example



Choosing "**Music**" from the source menu brings up the Main Music Menu screen. You can select music by Song, Artist, Album, Genre, Playlist or Folder, using the appropriate button. Then, navigate through the list to choose your song.

Choosing "**Video**" brings up the "Video" screen. You can view all the video files stored on the SD card.

Choosing "**Photo**" brings up the "Photo" screen. You can select your preferred folder and thereafter manually browse the available JPEG pictures, or run an automatic slide show.

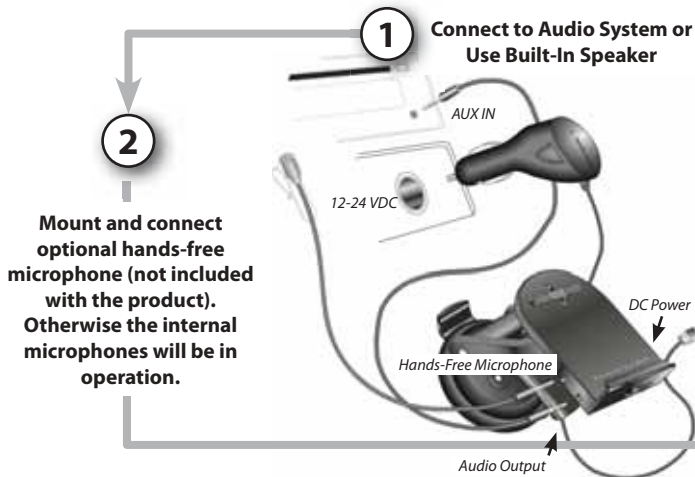
## Video Menu Example



## Photo Menu Example



# Car Connections



A separate audio cable is not included with the unit and has to be purchased separately if required.

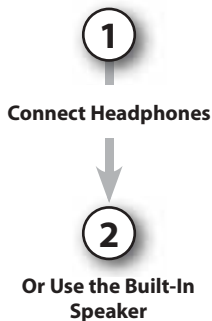
Please consult the manual of your vehicle's audio system to find out the correct cable type.

# Portable Audio

*Note: The headphone output may also be connected to the line/aux input of an audio device when the GPS unit is away from the car, but when docked in the mount it is recommended to use the connection in the mount for easy removal and redocking of the unit.*



The installation and use suggestions provided by the manufacturer may be subject to restrictions or limitations by federal, state or local laws. The user should determine whether the installation and use of this device is governed by any law prior to installation or use. For more information, please consult the user's manual online at <http://www.guideandplay.com>.



# Troubleshooting

Problem/Symptom	Possible Solution
Unit does not turn on at all	Charge battery, check UNLOCK switch
Unit does not have a good GPS signal	Make sure unit has a clear and unobstructed view of the sky
Unit does not have songs/movies	Requires loading to SD card
Computer sees unit as "MTP Device"	Change preference in "Settings" menu
Screen is too bright or too dim	Adjust in "Settings" menu or press rotary wheel on the right side
Volume is too low for navigation prompts	Adjust volume using rotary wheel on the right side or adjust volume of navigation prompts in Volume Mixer (Settings Menu)
Output level is low or distorted	Increase media player volume in Volume Mixer (Settings Menu)
Suction cup mount is loose	Reposition with moderate force
Screen is loose on mount	Make sure it is securely "clicked" into place on both the bottom and back
Unit is unresponsive, won't power off	Using a paper clip, press the reset button on the right side of the bottom panel
Unit does not show traffic information	Please connect car charger to mounting base to receive traffic messages (TMC).
Unit does not find the <i>Bluetooth</i> ® phone or device	Ensure the device is enabled for "discovery" or "pairing".
Remote control knob is unresponsive	Try pressing the top, center and right buttons simultaneously for 2 seconds, then turn the outer ring until the highlight bar moves. If the control knob is still unresponsive, try a fresh CR2032 type battery.
Battery is down although unit has not been used for some time	The battery gets discharged over time when unit is in "Stand-by" mode. Please use "Power-off" mode when storing the unit for a long period of time.
Video files are not shown correctly	Video resolution should be a multiple of four, such as 480x272. Please convert videos to supported resolution.
Unit does not show traffic (TMC) information	The unit uses an active FM antenna running inside the car charger cable. Please connect the cable to both mount and cigarette lighter plug to enable reception of traffic (TMC) messages

*This Class B digital apparatus complies with Canadian ICES-003.*



*Temperatures:*

*Standard operation:  $-10^{\circ}\text{C}$  ( $+14^{\circ}\text{F}$ ) to  $+55^{\circ}\text{C}$  ( $+131^{\circ}\text{F}$ ).*

*Short period storage:  $-20^{\circ}\text{C}$  ( $-4^{\circ}\text{F}$ ) to  $+60^{\circ}\text{C}$  ( $+140^{\circ}\text{F}$ ).*

*Long period storage:  $0^{\circ}\text{C}$  ( $+32^{\circ}\text{F}$ ) to  $+25^{\circ}\text{C}$  ( $+77^{\circ}\text{F}$ ).*

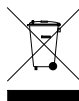
## CAUTION

RISK OF EXPLOSION IF BATTERY IS REPLACED BY AN INCORRECT TYPE.

DISPOSE OF USED BATTERIES ACCORDING TO INSTRUCTIONS

harman/kardon®  
**guide+play™**

8500 Balboa Boulevard, Northridge, CA 91329, USA  
www.harmankardon.com  
© 2008 Harman International Industries, Incorporated. All rights reserved.  
Part No. 950-0223-001



## Declaration of Conformity



We, Harman Consumer Group, Inc.  
8500 Balboa Boulevard, Northridge, CA 91329, USA

declare in own responsibility that the product described  
in this manual is in compliance with technical standards:

EN 55022:2006, Class B  
EN 61000-3-2:2000+A2:2005, Class D  
EN 61000-3-3:1995+A1:2001+A2:2005  
EN 55024:1998+A1:2001+A2:2003  
IEC 61000-4-2:1995+A1:1998+A2:2000  
IEC 61000-4-3:2002+A1:2002  
IEC 61000-4-4:2004  
IEC 61000-4-5:1995+A1:2000  
IEC 61000-4-6:1996+A1:2000  
IEC 61000-4-8:1993+A1:2000  
IEC 61000-4-11:2004  
EN 300 328 V1.7.1:2006  
EN 301 357 V1.3.1:2006  
EN 301 489-1 V1.6.1:2005  
EN 301 489-17 V1.2.1:2002  
EN 301 489-9 V1.3.1:2002  
EN 60950-1:2001+A11

Klaus Lebherz  
Harman Consumer Group, Inc.  
Heilbronn, GERMANY 02/08

guide+play™